



OBERDORFER®

An Ingersoll Rand Business

Model 750B Bronze Base Mounted Self-Priming Centrifugal Pump



OB750B - Pump Only - for Single Phase Motor

OB750B-T19 - 1-1/2 HP, 3450 RPM, 115/230 V, Single Phase

OB750BP - Pump Only - for Polyphase Motor

OB750BP-T57 - 1-1/2 HP, 3450 RPM, 220/440 V, Polyphase

Features

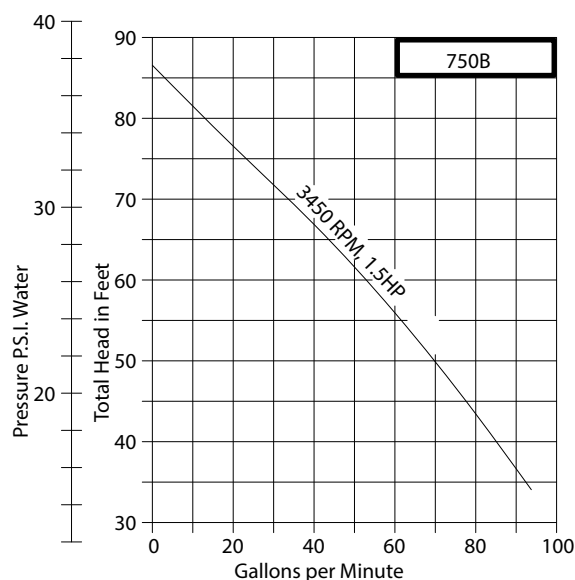
- Pipe Size: 1-1/2" NPT
- All Bronze Construction
- Self-Priming to 20 Ft. Suction Lift
- Seal Options Available for Solvents and Mild Chemicals
- Pump Heads can be Field Mounted to Standard Nema C
- Jet Pump Motor with Threaded Shaft
- Base May be Mounted to Motors with Weld-On Feet
- Available with Nickel Alloy Shaft for Marine Applications

Drive

Centrifugal pumps are designed for single rotation and are non reversible. Standard rotation is counter clockwise looking at the pump inlet port (clockwise facing pump shaft). Close coupled centrifugal pumps may be driven by a variety of power sources such as electric motors, hydraulic motors or air motors. Self priming centrifugal pumps must be operated in the horizontal position. Pumps with polyphase motors must be checked for proper shaft rotation at the time of installation. Rotation must correspond with directional arrow on pump body.

Performance

Capacity Water at 60°F



Liquids and Temperature

Bronze pumps are suitable for most common liquids in the pH range from 4-11. If in doubt consult with factory or check the Oberdorfer Chemical Resistance Guide booklet.

The temperature limit for bronze pumps is 212°F. Higher temperatures are possible with Fluoroelastomer or Polytetrafluoroethylene (PTFE) seals. Centrifugal pumps are not well suited for pumping viscous liquids. Viscosities up to 2000 SSu may be handled resulting in reduced performance and efficiency.

Pump seal is mechanical carbon face type mated to ceramic wear face for maximum durability. Other seal components are made of Nitrile with low swell characteristics for compatibility with a wide range of liquids including many chemicals and solvents.

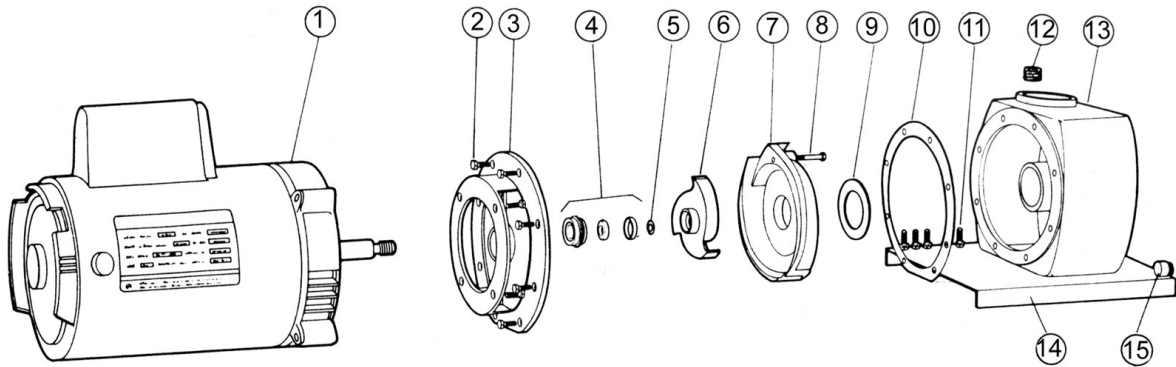
The standard mechanical shaft seal has a Nitrile rubber element. Fluoroelastomer and Chemlon Polytetrafluoroethylene (PTFE) seals are available to handle strong solvents and chemicals.



OBERDORFER®

An Ingersoll Rand Business

Exploded View and Parts List

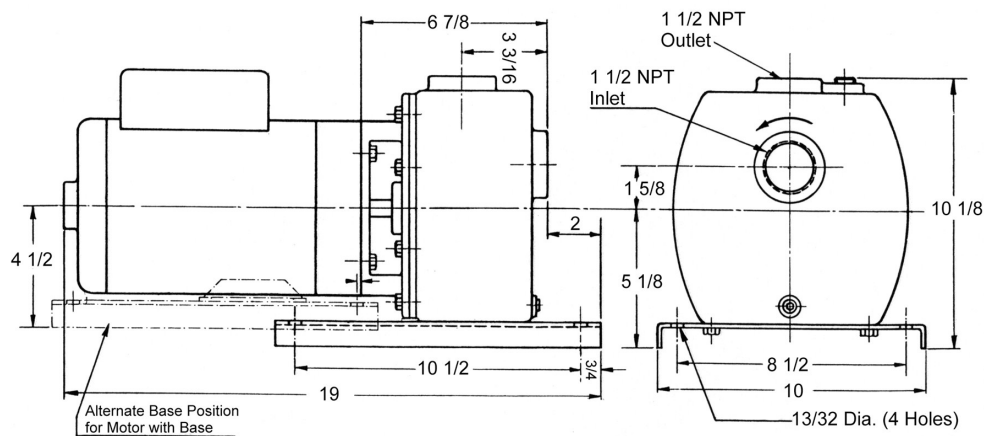


	1	2	3	4	5	6	7	8	9	10	11	12	13
	Motor	Screw	Adapter	Seal Assy	Shim	Impeller	Diffuser	Screw	Gasket Diffuser	O-Ring	Screw	Plug	Body
Pump No.	1 Req'd	12 Req'd	1 Req'd	1 Req'd	1 Req'd	1 Req'd	1 Req'd	2 Req'd	1 Req'd	1 Req'd	4 Req'd	1 Req'd	1 Req'd
OB750B	--	OB5411	OB7926	OB32155	OB602501, 02 or 03	OB7927	OB7928	OB7796	OB7798	OB2390-167	OB7637	OB7934	OB7929
OB750B-T19	OB5862	OB5411	OB7926	OB32155	OB602501, 02 or 03	OB7927	OB7928	OB7796	OB7798	OB2390-167	OB7637	OB7934	OB7929
OB750BP	--	OB5411	OB7926	OB32155	OB602501, 02 or 03	OB7932	OB7928	OB7796	OB7798	OB2390-167	OB7637	OB7934	OB7929
OB750BP-T57	OB7167	OB5411	OB7926	OB32155	OB602501, 02 or 03	OB7932	OB7928	OB7796	OB7798	OB2390-167	OB7637	OB7934	OB7929

	14	15	16	17	18	Repair Kit
	Base	Plug	Set Screw	Hex Nut	Washer	
Pump No.	1 Req'd	1 Req'd	1 Req'd	4 Req'd	4 Req'd	
OB750B	OB6742	OB7321	--	--	--	OB11145
OB750B-T19	OB6742	OB7321	--	OB5597	OB5915	OB11145
OB750BP	OB6742	OB7321	OB9849	--	--	OB11147
OB750BP-T57	OB6742	OB7321	OB9849	OB5597	OB5915	OB11147

Items 4A(Seal Head), 4B (Wear Face), 4C (Seal Seat) available as assembly p/n OB32155.
Repair Kits include items 4A(Seal Head), 4B (Wear Face), 4C (Seal Seat), 6, 9 & 10.
Items 16, 17 & 18 not shown.

Dimensions



12500 South Pulaski Road
Alsip, IL 60803, USA
Phone (800) 448.1668